



OBEX[®]

Modular Entrance Flooring Solutions

The OBEX[®] modular tile system offers multiple combinations of designs and colours to reflect interior decoration or create a fantastic feature in the entrance.

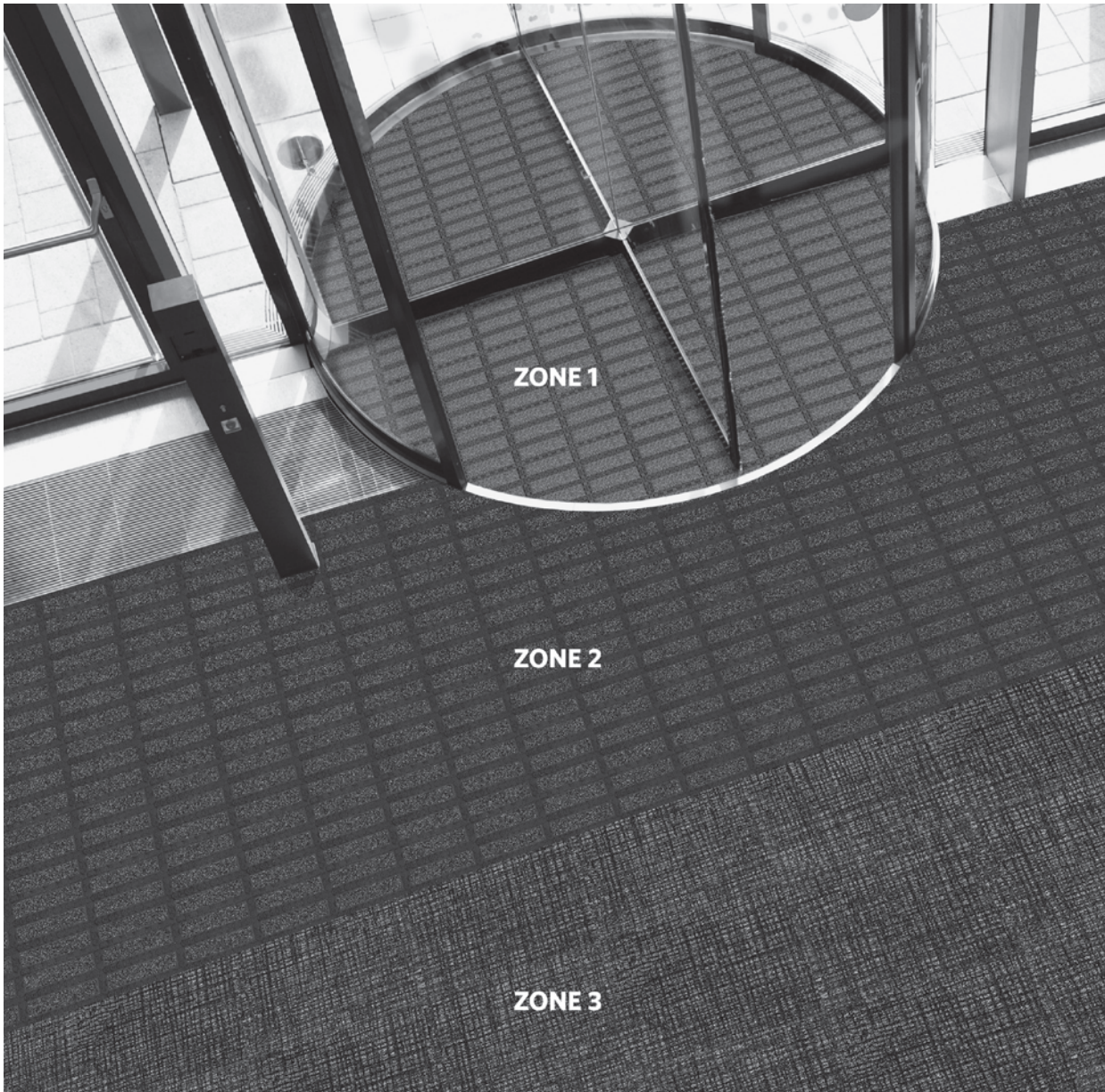
Available ex-Stock from PFL

No templates required

Easy to fit on site

Milliken[™]

THE OBEX® PRODUCT COLLECTION PROVIDES A COMPLETE 3 ZONE CONCEPT SOLUTION



- Zone 1

OUTDOORS: The area just before the building access -requires a product with scraping action to remove grit and heavy dirt particles, including snow or sand.
Milliken Product Solution: Prior™ and/or Tergo™ modular scraper system
- Zone 2

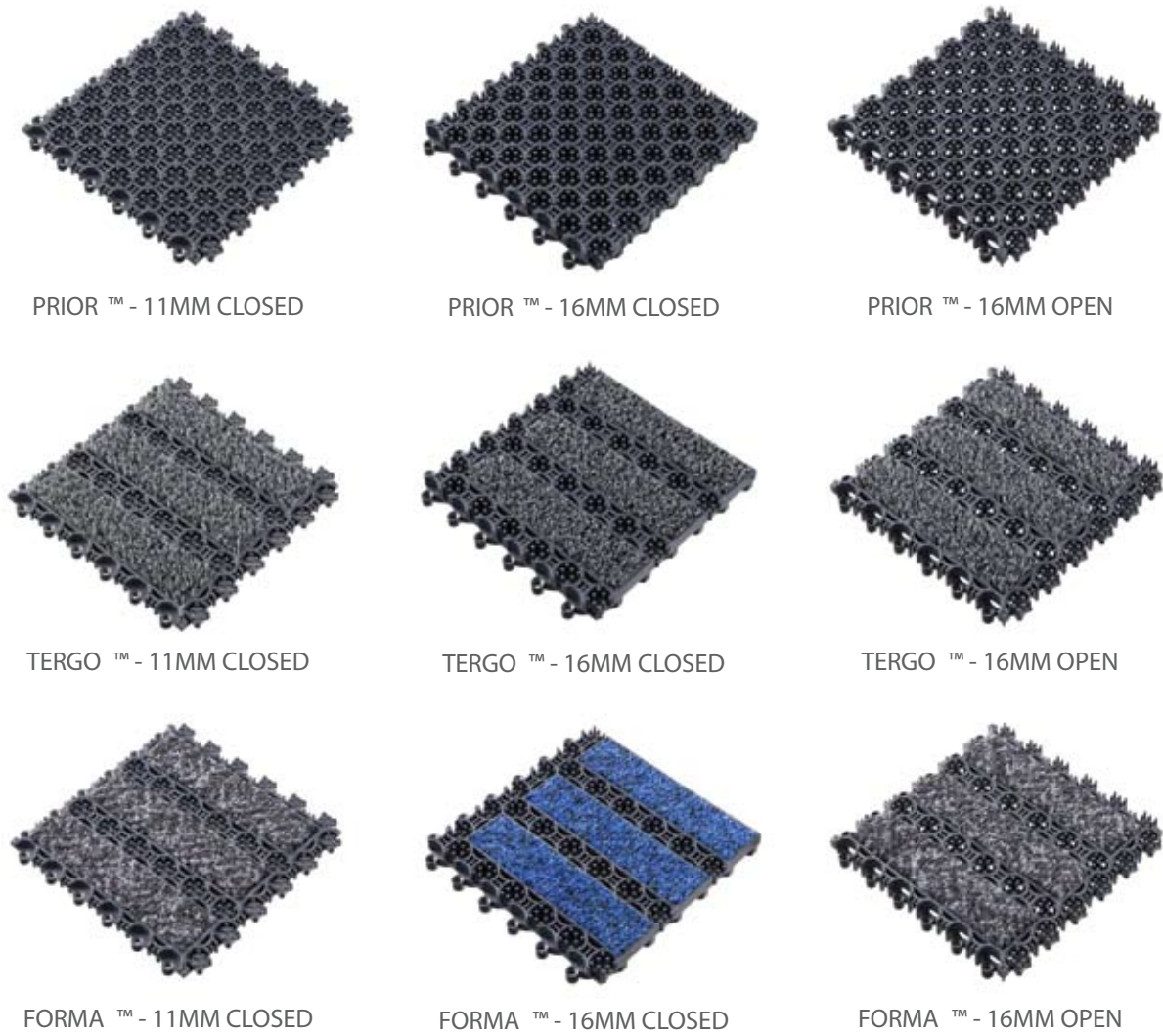
INDOORS: The primary area just inside the building where a product with dual action - scraping and moisture retention - should be installed to defend against dirt and moisture. This area often features a recessed mat well.
Milliken Product Solution: Tergo™ and/or Forma™ - a modular scraper and textile duo system.
- Zone 3

INDOORS: The secondary area inside the building after Zone 2. A textile product for moisture retention is the preferred solution. Also applicable to circulation areas other than entrances.
Milliken Product Solution: Quadrus™ - modular textile with cushion backing. Available in 3 designs/8 colours.
- Special Usage

SPECIAL USAGE: For areas with specific needs such as brand image promotion, anti-fatigue, wet areas, communication or messages, etc.

Other product solutions are available in the OBEX® range, such as textile roll goods for circulation areas as well as individual standard and logo-mats

PRIOR™ / TERGO™ / FORMA™



QUADRUS™

Quadrus is a modular entrance tile system that creates a stunning first impression in a space that must also deal with an active world and create a barrier against the elements.

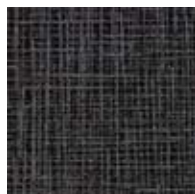
Designed to provide a superior combination of performance and aesthetics, the ECONYL® dual-fibre polyamide yarn and open textile construction will stop dirt and moisture at the door, while allowing easy removal during maintenance.



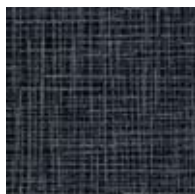
Star



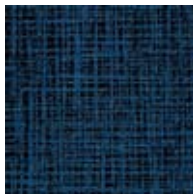
SAR27 Jupiter



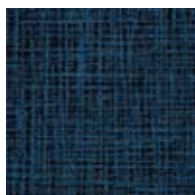
SAR118-27 Moon



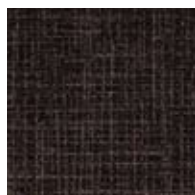
SAR73 Uranus



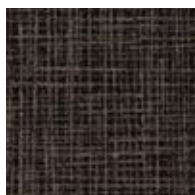
SAR183 Neptune



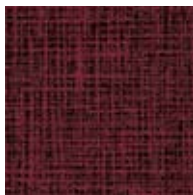
SAR123 Earth



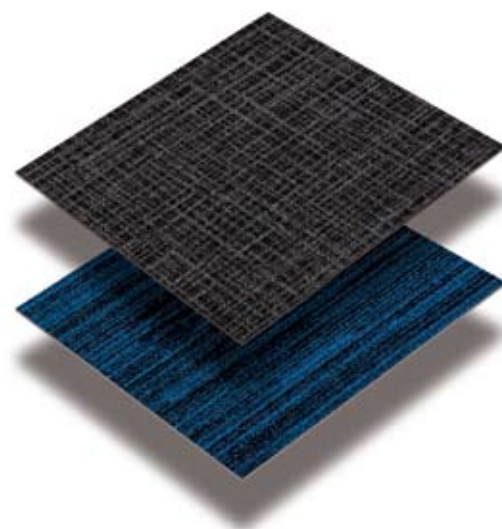
SAR96 Mercury



SAR114 Venus



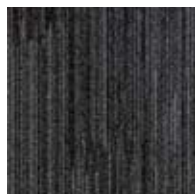
SAR169 Mars



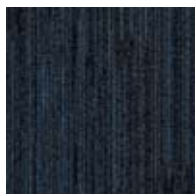
Comet



CMT27 Jupiter



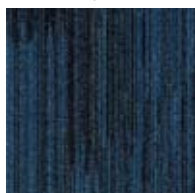
CMT118-27 Moon



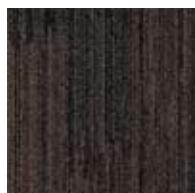
CMT73 Uranus



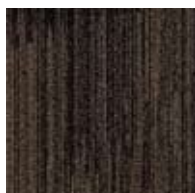
CMT183 Neptune



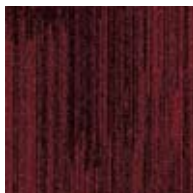
CMT123 Earth



CMT96 Mercury



CMT114 Venus



CMT169 Mars

Provincial Floorcoverings Ltd



total flooring solutions

LIMERICK

Unit 9, Raheen Business Park, Limerick

T. +353 (0) 61 227100

F. +353 (0) 61 227000

Lo. Call 1850 445 745

Email: sales@pfl.ie

DUBLIN

Unit 19/20/25 Westlink Industrial Estate,
Kilmore Road, Dublin 10

T. +353 (0) 1 6263913

F. +353 (0) 1 6263960

Lo. Call 1850 445 746

Email: salesdublin@pfl.ie

BELFAST

Unit 1 York Retail Park, 1 York Road,
Belfast, BT15 3GU

T. (0) 28 9075 3202

F. (0) 28 9075 3901

Email: salesbelfast@pfl.ie

Visit us at www.pfl.ie